

NW Stakeholder Reference Groups - Regional Community Benefit Sharing Options

community power
agency



Today's Info Session

Why co-ordinate regional community benefit sharing?

What would we want regional benefit sharing to do?

Understanding Benefit Sharing



Making a positive contribution in host communities

Building good relationships

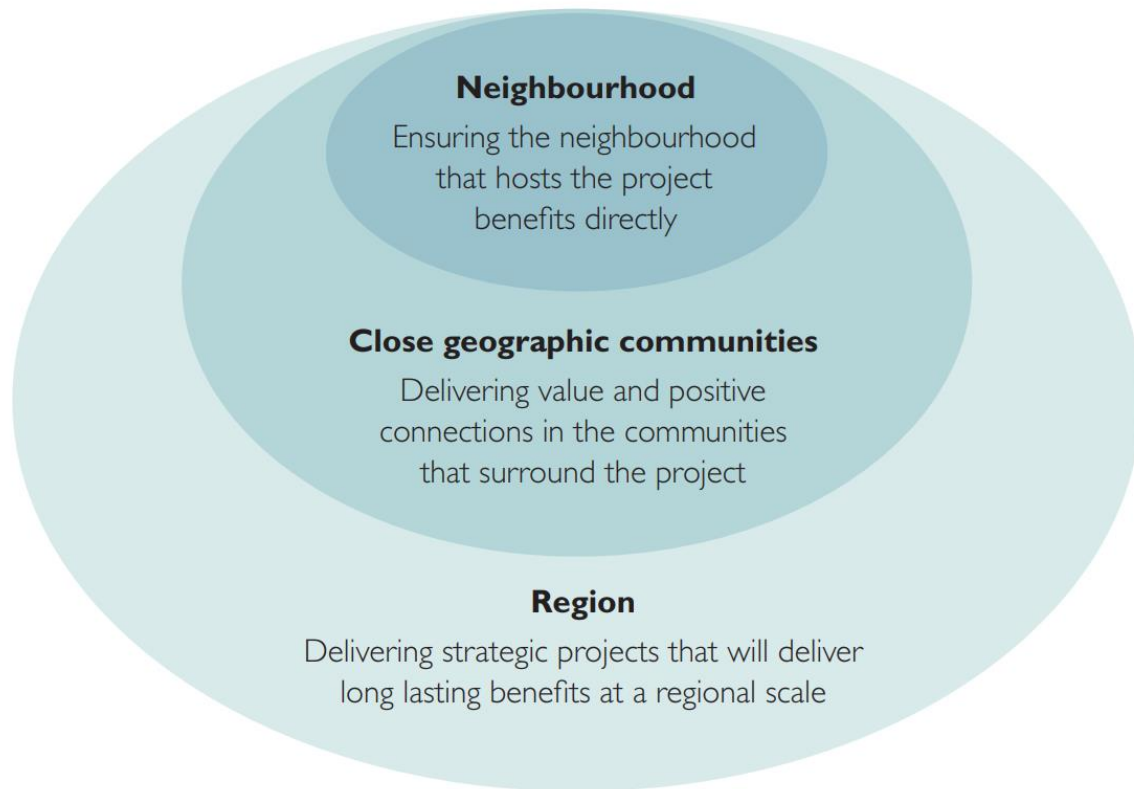
Having planned strategies

The project being valued by community

Community willingness for change

Recognising the shared value of sunshine, wind and water

Scope of Benefit Sharing



Indicative New England Renewable Energy Zone

8000 MW Target
500 MW Operational
1054 MW Approved
2917 MW Proposed

Legend

Solar Developments

- In Planning
- Approved
- Under Construction
- Operational

Wind Developments

- In Planning
- Approved
- Operational

Bioenergy Developments

- Operational

Battery Developments

- In Planning

Pumped Hydro/Hydro Developments

- In Planning
- Operational

Hybrid Developments

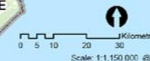
- In Planning

Operating System Voltages (kV)

- 132kV
- 330kV
- 500kV

- Primary Road
- Local Government Area
- Indicative Location of Renewable Energy Zones

* Interim Project Name



164 MW Approved
755MW Proposed



Benefit sharing budget allocation

(e.g. expected \$ per MW range appropriate for each type of project)

Project level benefit sharing:


Delivered by a proponent with their neighbours and adjacent local communities

REZ / Regional Level Benefit Sharing:


Delivered via a voluntary benefit sharing contribution or via the REZ Access Fee

How benefit sharing funds are split between neighbours, close community & region will vary depending on scale & context

Benefit sharing across multiple projects



What could be
not so great



What could be
great

Challenges of benefit sharing in REZ

- Multiple consultative committees
- Engagement fatigue -setting it up & managing it
- Lack of coordination, community confusion
- Lack of strategy for impact
- Duplication & cross over
- Numerous small grants that don't really scratch the surface of an issue
- Lack of long term initiatives that create meaningful change in a community

Opportunities of benefit sharing in REZ

- Coordination & collaboration to direct funding to key regional issues
- Innovative & meaningful projects could be funded over the long term
- Clear, consolidated communications about all opportunities
- Reduce administration & community resources needed to set up & manage over time
- Alignment & value adding to Council's strategic planning
- Social & economic prosperity changes in a region
- Leveraging bigger grants
- Long term impacts

What do we want regional CBS to do?

- Would it be beneficial to coordinate / administer project level CBS and / or regional level CBS?

What might this look like?

- One-stop information website about all projects & their benefit sharing opportunities
- Coordination between projects to avoid duplication
- Common application process for small grants
- Share a Community Reference Group
- Collaborate to co-fund important projects at regional level
- Allocate a portion of benefit sharing budget to regional level impact
- Allocate all benefit sharing funding to regional scale impact
- Allocate a portion for long term impacts (e.g. invest for a future fund)
- Advocate that all projects meet at least a certain expectations

Discussion

What does a Regional Benefit Sharing program need to do?

What would its purpose and role be?

Discussion

What does a Regional Benefit Sharing program need to do?

What are its key roles & functions?

Examples:

- One-stop information website about all projects & their benefit sharing opportunities
- Coordination between projects to avoid duplication
- Common application process for small grants
- Share a Community Reference Group
- Allocate a portion of benefit sharing budget to regional scale impacts

Meeting community needs

Examples from industry.....

Example: Cultural heritage partnership



- Musselroe Wind Farm (NE TAS) worked with melythina tiakana warrana Aboriginal Corporation (mtwAC)
- Creation of the Tebrakunna Visitors Centre, with content on local Indigenous history & culture as curated by mtwAC
- Mannalargenna Day celebrations on traditional lands attracting over 700 people annually
- Established Rangers Program for on-site management
- Other future ventures planned



Example: Biodiversity

- Proactive approach to design & layout
 - minimise impacts, maximise opportunities
- Bought neighbouring property for Biodiversity Offset
- Support local collaborations to do onsite biodiversity improvements (riparian zone) & manage biodiversity offset
 - Local Landcare
 - Indigenous rangers
 - Local nursery
 - Staff & local volunteer working bees



Example: Housing

To ease impact on local housing market, proponent paid for pre-fab granny flats in eligible backyards.

Workers use it during construction period ~2 years.
Lived integrated in community.

Once project was done, gifted to home owners.



Example: Crisis Accommodation

Dundonnell Wind Farm
Domestic Violence
Accommodation



Example: Health/ Dental care

Woolnorth Renewables Mobile Dental Program



Contacts and Attributions

Community Power Agency – www.cpagency.org.au or info@cpagency.org.au

© 2023 by Community Power Agency. This license allows reusers to distribute, remix, adapt, and build upon the material in any medium or format for noncommercial purposes only, and only so long as attribution is given to the creator. If you remix, adapt, or build upon the material, you must license the modified material under identical terms.

<https://creativecommons.org/licenses/by-nc-sa/4.0/>

